

Visit the Museum of Science in Boston, MA!

The MoS and TERC are looking for families and school groups to use and give opinions about a new portable, 3D dictionary of ASL science and math terms that is on an iPod Touch.

We are inviting families with children that:

- are deaf or hard of hearing
- are between 5 and 12+ years old, and
- use ASL as their first language

AND

School Groups of children that:

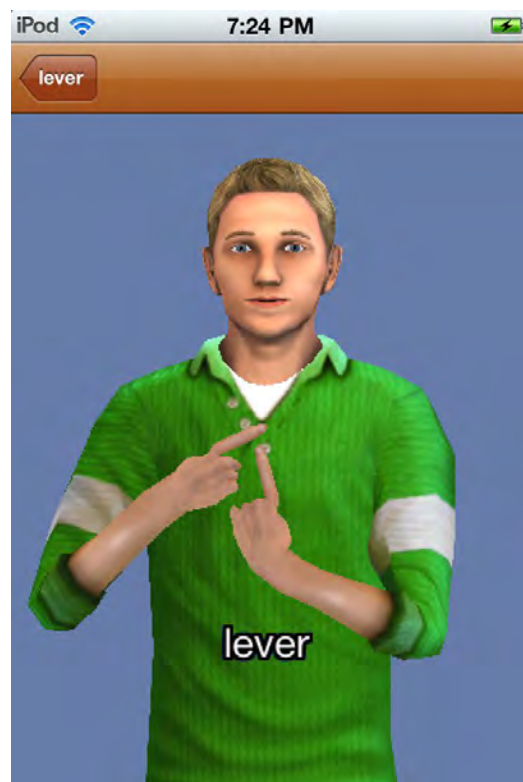
- are deaf or hard of hearing
- are in grades K-8, and
- use ASL as their first language

Come to the Museum of Science FREE
(with free parking for families and bus transportation for school groups) and use the 3D ASL dictionary to explore 1 of 2 exhibits:

- Run, jump and swing at "Science in the Park"
- "Take a Closer Look" with your senses!
- Give your opinion of the 3D ASL science dictionary
- Explore the Museum!

Please contact Tara Robillard by email:

tara_robillard@terc.edu or phone: 617-873-9872 for more information, and/or to set up a visit date and time. Scheduling visits now for February – December of 2012!



This work is being conducted as part of the Handheld Signing Math & Science Dictionaries for Deaf and Hard of Hearing Museum Visitors research project and is being funded, in part, by the National Science Foundation (NSF).

